

## Interactive

# SUPRA 500/700/900 VA

Line Interactive UPS, with built-in voltage regulator to enlarge the operation input range reducing the battery usage. Based on microprocessor controller, Supra is a high reliable UPS perfect for home and small office applications.



### Interactive Technology:

Internal voltage stabilizer regulates AC input to generate an optimal UPS output without the need of using batteries. In this way, input range is wider than similar UPS without interactive technology. Only when AC input is out of this wider input range, Supra go to battery mode to provide reliable energy to your protected products. The main advantage of this technology is to provide an input range about 15% wider than standard input range. Other important advantage is to make battery life longer than offline UPS without interactive technology.

### Easy Connection:

Connecting your computer and electronic equipment is very simple. Our products offer power outlets according to the country of distribution.

### Total Power Protection:

Besides voltage fluctuations, Supra protects all lines against spikes and surges, not only power outlets are protected, but also RJ11 ports, to protect the connection with routers.

### Smart Battery Charger:

A state of the art battery charger allows recharging up to 90% capacity in less than 4 hours, so after deep discharge, the UPS will be ready for full backup in shorter time than other brands.

### Auto-Recovery:

A long blackout could discharge batteries completely forcing UPS to power-off. When AC recovery is detected, Supra is able to restart automatically without the need of manual operation. This feature is especially useful in unattended applications.

### Cold Start:

This function allows Supra family to power your equipment even without power in AC Input, like a small power generator.

### Control Software:

Allows to configure and manage all UPS functions. Besides it can close files and programs, as well as shutdown operating systems and your computer equipment, during long power outage. Software also keeps an Event and Data record and allows programming periodic battery tests, as well as UPS automatic power On/Off. Control software requires the UPS to have either USB or RS-232 port.

### Available versions:

Supra is available for 120V, 220V and 230V AC Lines. Power outlets are suitable for each standard: NEMA, Schuko, IEC, etc.

## Applications: Small Office and Home Personal Computers

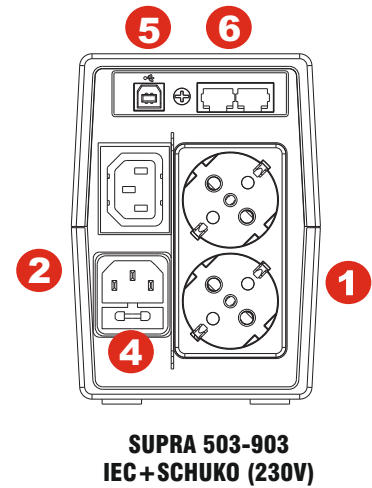
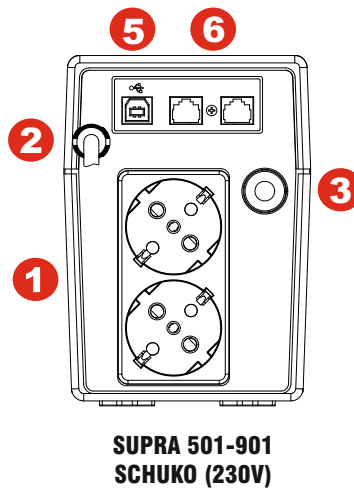
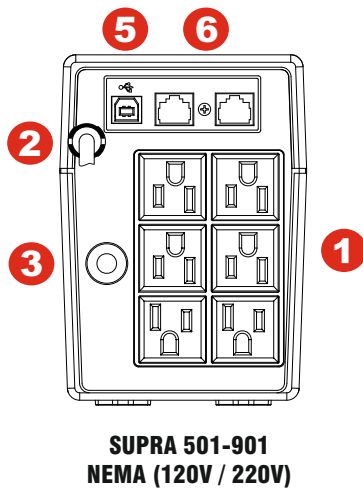
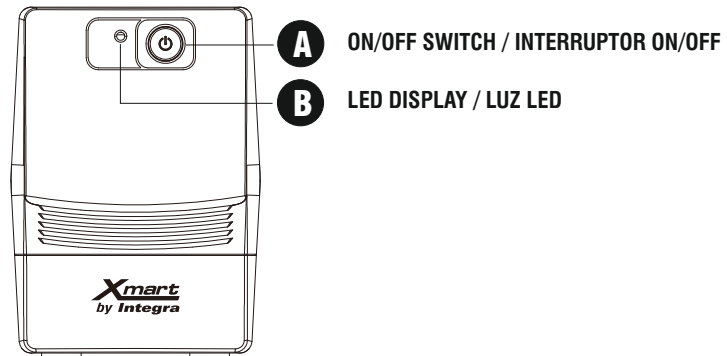


## Technical Features / Características Técnicas

- 1.- Battery Supported Outlets / Salidas Respaldadas por Baterías
- 2.- AC Input / Entrada Corriente Alterna
- 3.- Input Breaker / Disyuntor de Entrada

- 4.- Input Fuse / Fusible de Entrada
- 5.- USB (optional)
- 6.- RJ-11

## REAR PANEL



### Standards & Certifications: CE

#### IEC Low Voltage Directives

IEC60950-1:2001: Information Technology Equipment – Safety-Part1: General Requirement

EN62040-1-1:2003: Uninterruptible Power Systems (UPS) Part 1-1: General and Safety requirements for UPS used in operator access areas

#### IEC EMC Directives

EN 62040-2: 2006: Uninterruptible Power Systems (UPS) Part 2: Electromagnetic compatibility class C2 (EMC)

IEC 61000-4-2: 2001: Electrostatic discharge immunity test

IEC 61000-4-3: 2002: Radiated, radio-frequency electromagnetic field immunity test

IEC 61000-4-4: 2004: Electrical fast transient/burst immunity test

IEC 61000-4-5: 2005: Surge immunity test

IEC 61000-2-2: 2002: Compatibility levels for low-frequency conducted disturbances and signaling in public low-voltage power supply systems

## Technical Features / Características Técnicas

INTERACTIVE UPS	500 VA	700 VA	900 VA
Capacity / Capacidad	500VA / 250W	700VA / 360W	900VA / 480W
<b>Input / Entrada</b>			
Voltage / Voltaje	120V Model: (89-145 Vac) - 220V Model: (162-290V) - 230V Model: (170-299Vac)		
Frequency / Frecuencia	60Hz / 50 Hz: Auto Sensing / Autodetección		
Generator Compatible / Compatible con motogeneradores	Yes / Sí		
<b>Output / Salida</b>			
Voltage / Voltaje	+/- 10% (1 Phase / 1 Fase)		
Frequency / Frecuencia	60Hz (+/- 1Hz) - 50Hz (+/- 1Hz)		
Transfer Time / Tiempo Transferencia:	2 - 6 ms typical / típico		
Waveform / Forma de Onda (Normal Mode)	Sinewave / Sinusoidal		
Waveform / Forma de Onda (Battery Mode)	Simulated Sinewave / Sinusoidal Sintetizada		
<b>Batteries / Baterías</b>			
Type / Tipo	Sealed Lead Acid - Maintenance Free (VRLA AGM) / Acido Plomo Sellada Sin Mtto. (VRLA AGM)		
Capacity / Capacidad	5AH	7AH	9AH
Quantity / Cantidad	1	1	1
Back-up Time Typical / Autonomía Típica (N1*)	10-12 min.	17-20 min.	22-25 min.
Recharge Time / Tiempo de Recarga	4-6 hours to 90% capacity / 4-6 Horas hasta 90% de capacidad		
Protections / Protecciones	Deep discharge and overcharge / Descarga Profundas y Sobre-Cargas		
<b>Alarms-Indications / Alarmas-Indicaciones</b>			
Models: 501-901 & 503-903: LED	Battery Mode / Low Battery / Overload / Battery Replacement / UPS Fault		
AC Mode / Modo Normal	Green Lighting / Verde Fijo		
Battery Mode / Modo Batería	Green Flashing / Verde Intermitente		
Acoustic Alarm / Alarma Acústica (all models)	Battery Mode / Low Battery / Overload / Battery Replacement / UPS Fault		
<b>Protections / Protecciones</b>			
Input Circuit Breaker / "Breaker" de Entrada	With Manual Reset / Rearmable		
Surge/Spikes Protection (Line H-N)	Power Outlet Sockets with surge & spikes protection: L-N		
Protección contra Picos / Rayos (Línea L-N)	Tomas de Salida Protegidas contra Picos/Rayos: L-N		
Surge/Spikes Protection (RJ45)	Tel/Internet/Ethernet: RJ45		
Protección contra Picos / Rayos (RJ45)			
Total Surge Suppression / Supresión Total	120V Model: (> 758J) - 220V & 230 Models: (>175J)		
<b>Features / Funcionalidades</b>			
Power Outlets per model / Tomas por modelo			
Models: 501 / 701 / 901 - NEMA 120V & NEMA 220V	6 x NEMA5-15R		
Models: 501 / 701 / 901 - SCHUKO 230V	2 x Schuko		
Models: 503 / 703 / 903 - IEC + SCHUKO 230V	1 x IEC + 2 x Schuko		
Communication / Comunicación	USB Port / Puerto USB (optional for 120V models / opcional para modelos 120V)		
Software / Software	Supports/Compatible: Windows, Mac OSX, Linux, Unix		
Dimensions / Dimensiones	300 x 101 x 142 mm		
Net Weight / Peso Neto Unitario	3.6 Kg	4.3 Kg	4.9 Kg
Operating / Condiciones de Operación:	< 95% RH / 0-40°C / ≤ 40 dB @ 1 mt		
<b>Packing / Empaque</b>			
Carton Information / Información Cartón	4 units per carton / 4 unidades por carton (350x600x260 mm)		
Half Pallet Information / Información Medio Pallet	96pcs / 364Kg 120x100x113cm	96pcs / 432Kg 120x100x113cm	96pcs / 489Kg 120x100x113cm
Full Pallet Information / Información Medio Pallet	192pcs / 729Kg 120x100x213cm	192pcs / 864Kg 120x100x213cm	192pcs / 979Kg 120x100x213cm
<b>Safety &amp; Standards</b>			
For 220V & 230V	CE (Low Voltage Directive 2006/95/EC & EMC Directive 2004/108/EC)		
Conduction & Radiation (Models 220V/230V)	IEC / EN 62040-2 (Class 2 EMC)		
Quality & Environment	RoHS / ISO9001 & ISO14001		

Technical specifications may change without further notice. Las especificaciones pueden cambiar sin aviso previo.

N1\*: Times for 1PC + TFT load / Tiempos para 1PC + Pantalla TFT